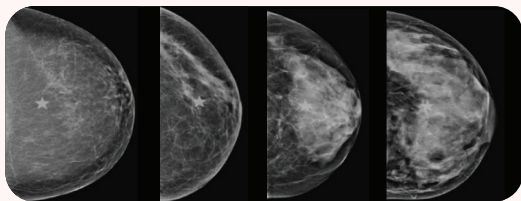




Breast Density Matters

About 50% of women have dense breast tissue. Having dense breasts is normal, but it puts you at higher risk of breast cancer and makes mammography less sensitive.



A B C D
Fatty Breast  Dense Breast

For these women, mammography alone may not be enough to find breast cancer.

When used in combination with mammography, screening breast ultrasound enhances the detection of cancer in dense breast tissue.

Screening Breast Ultrasound exams are now performed by this office.

THE KATHERINE M. CYRAN M.D.

Breast Center

Personalized Breast Health, Care, and Imaging

powered by Onsite Women's Health

You Can Benefit from a Screening Breast Ultrasound

Dense breast tissue can hide a cancer on a mammogram, but because the ultrasound uses a different method to "see" the tissue, these cancers may be more easily detected using ultrasound. This type of ultrasound is especially helpful for women with dense breast tissue because it is performed manually of the entire breast and underarm areas and also allows the technologist to focus on specific areas of breast tissue in real time.

What to Expect During the Scan

The exam is straightforward and typically takes about 15-20 minutes. You will lie comfortably on an exam table while a warm gel is applied to the breast. An imaging professional will gently move the handheld ultrasound device over both breast areas and underarms to capture images. The procedure is non-invasive, painless and does not require any special preparation.

If you have questions about insurance coverage, call your carrier and ask them to verify your benefits using the following information to determine your approximate out-of-pocket responsibility:

- **76641 + modifier 50**
- **Primary diagnosis code: Z12.39**
- **Secondary diagnosis code: R92.3**



For more information, call (614) 459-1596
or visit kmcbreastcenter.com.